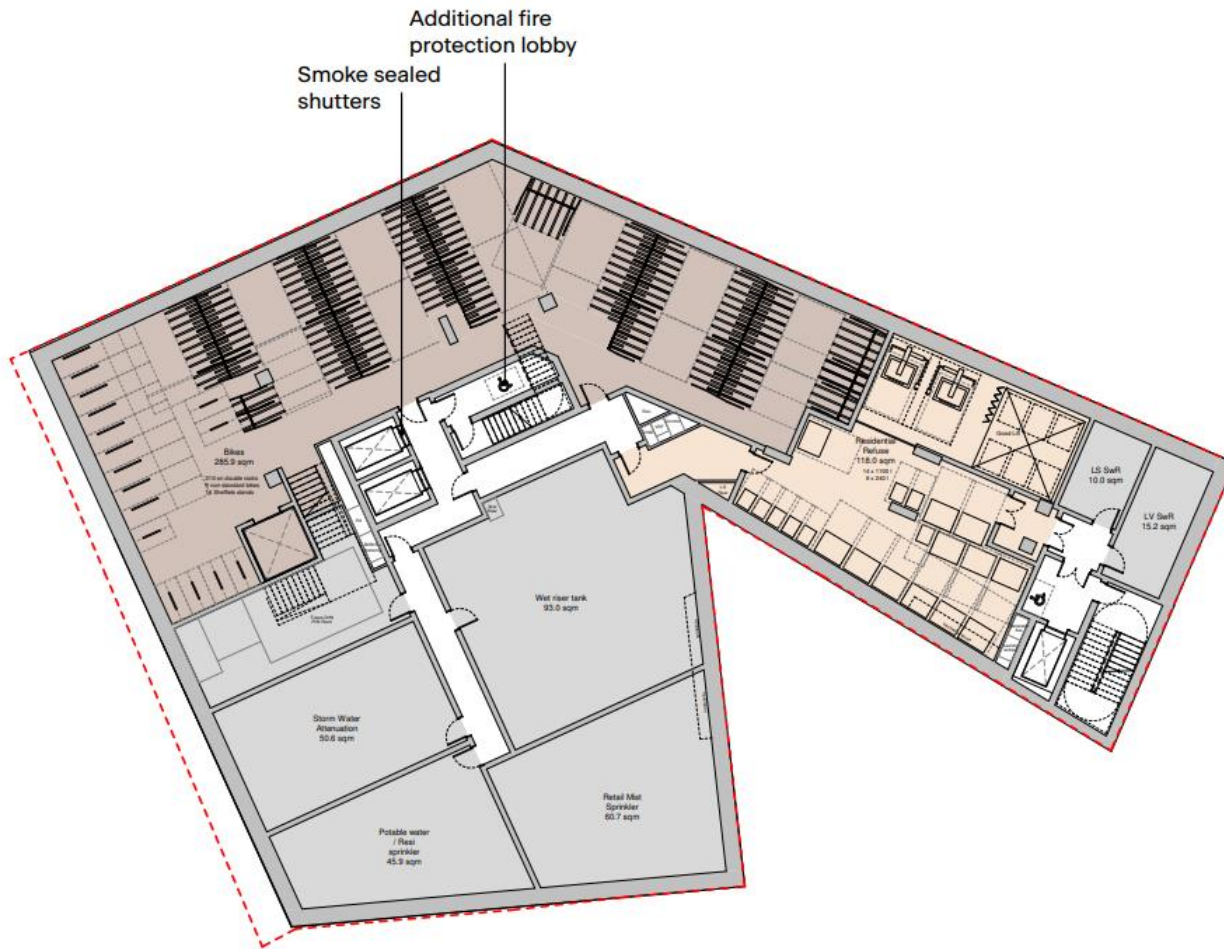
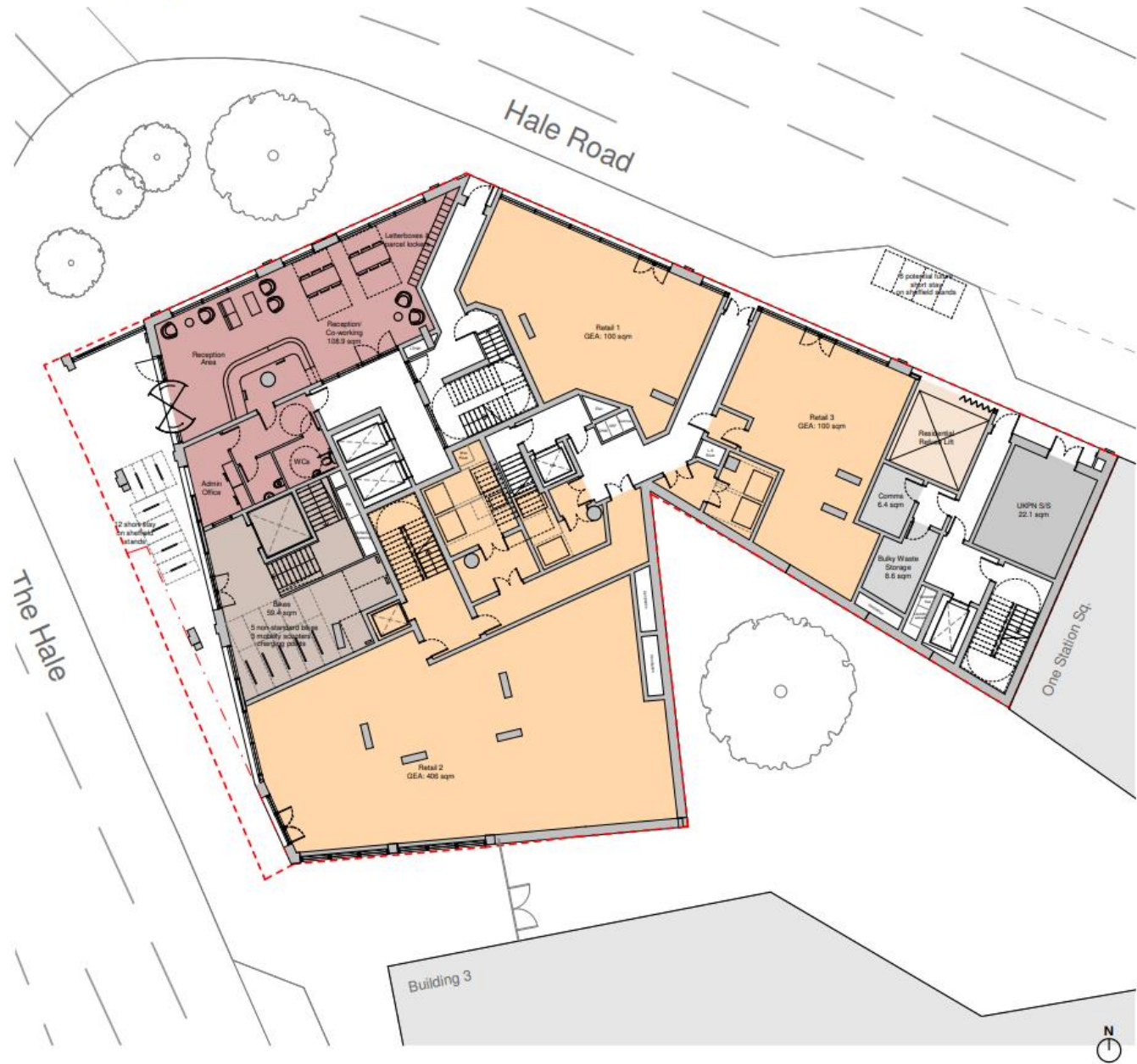


Appendix 6: Plans of the proposed scheme

Basement



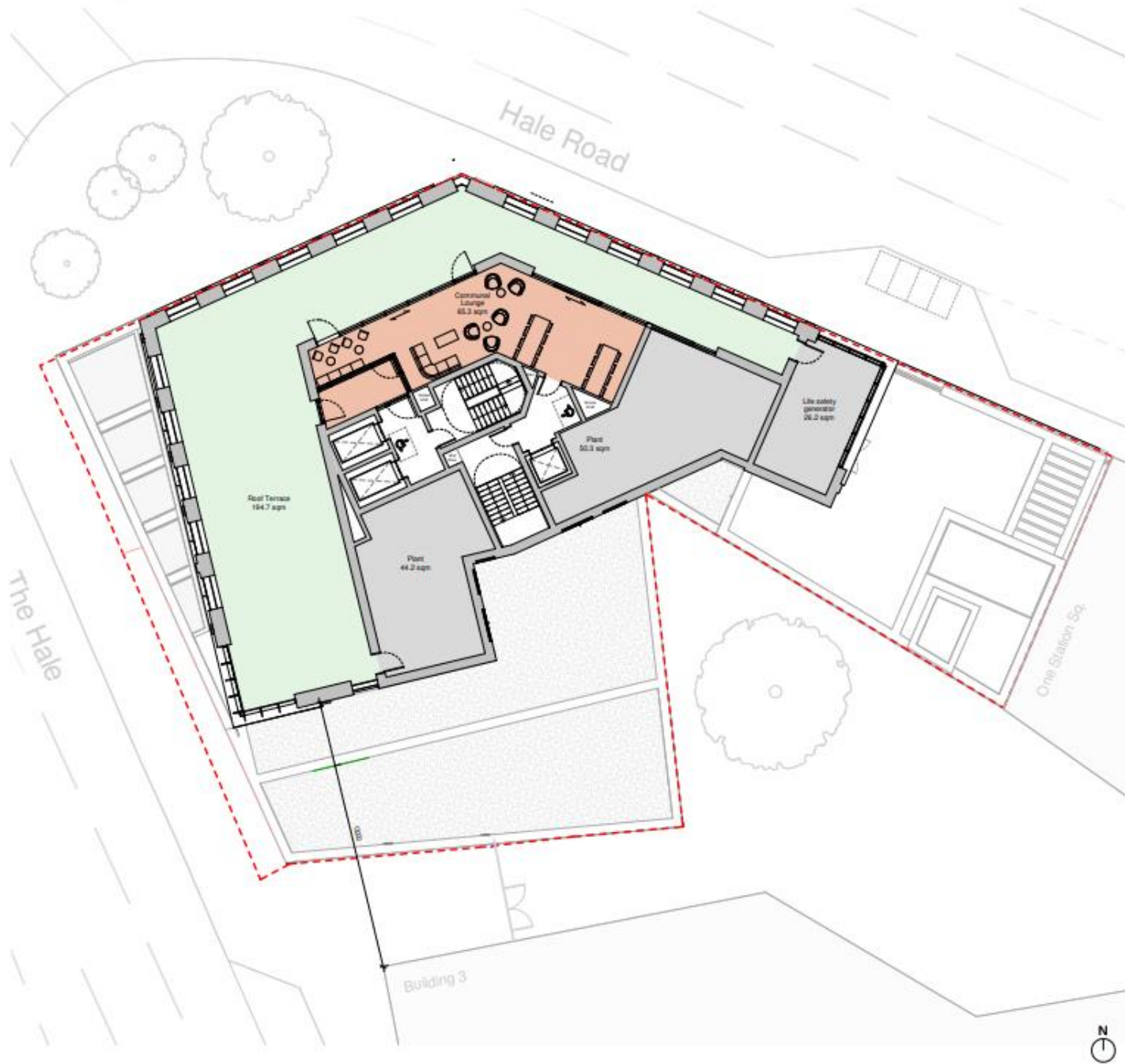
Ground Floor



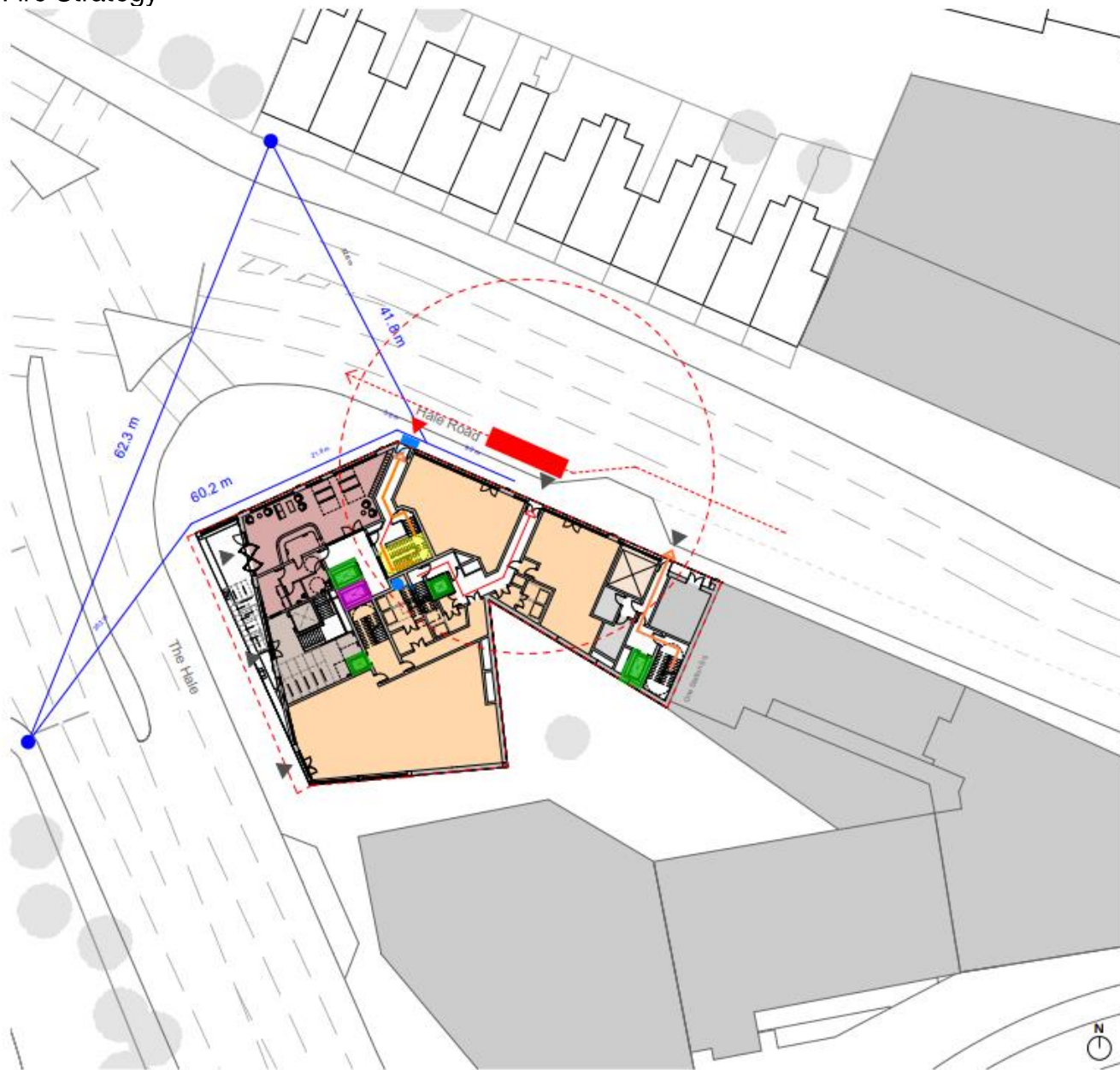
Eighth to Twenty-Third Floor



Twenty-Fourth Floor



Fire Strategy



- An additional stair and evacuation lift serving the 24 floor tower element of the building to enhance fire protection.
- All stores and access onto the final exit route have been lobbied.
- Wet risers are located within the main escape stairs which lead directly to the outside via a protected lobby.
- The building will be fitted with sprinklers throughout as well as mechanical smoke extract within common areas.

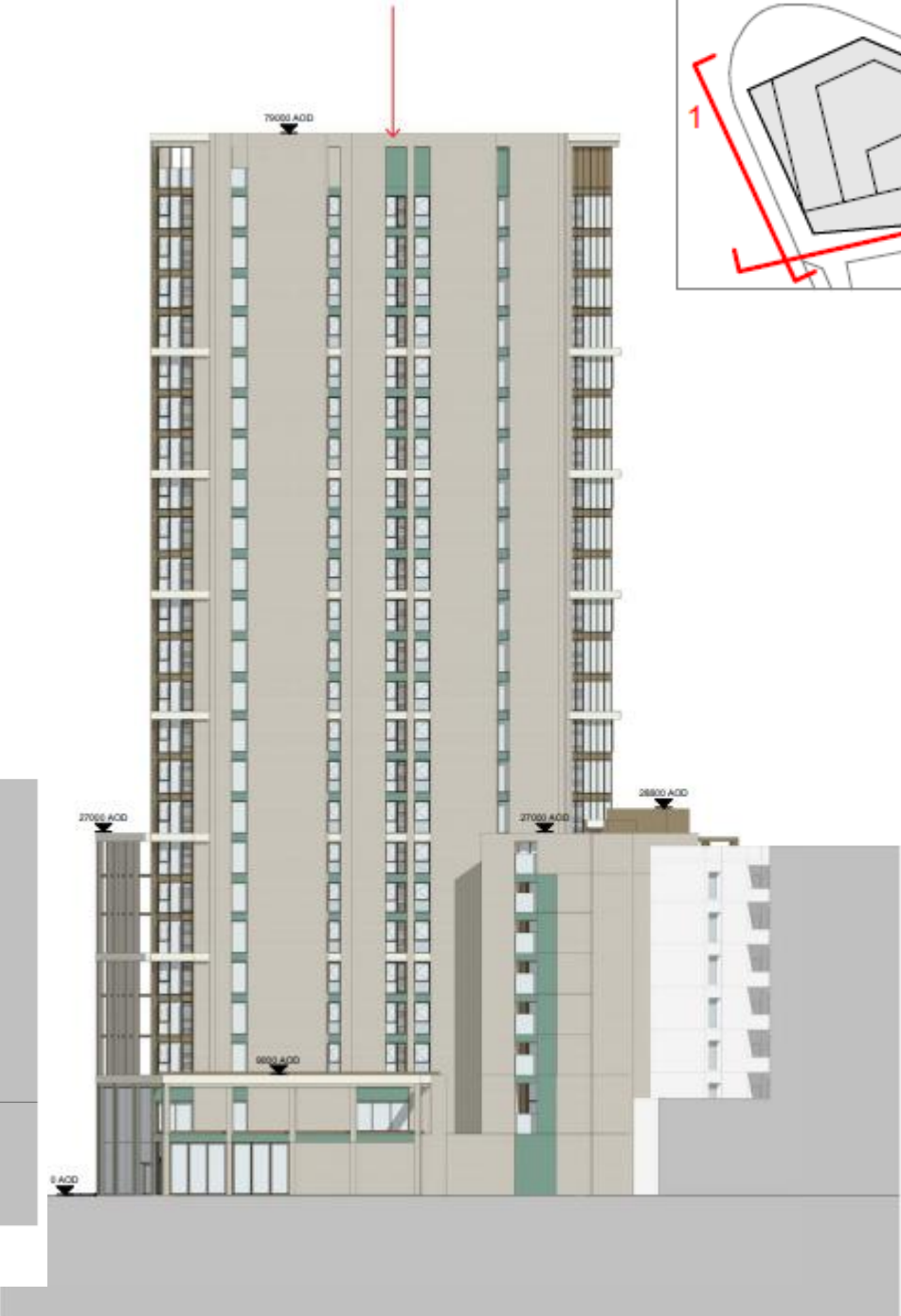
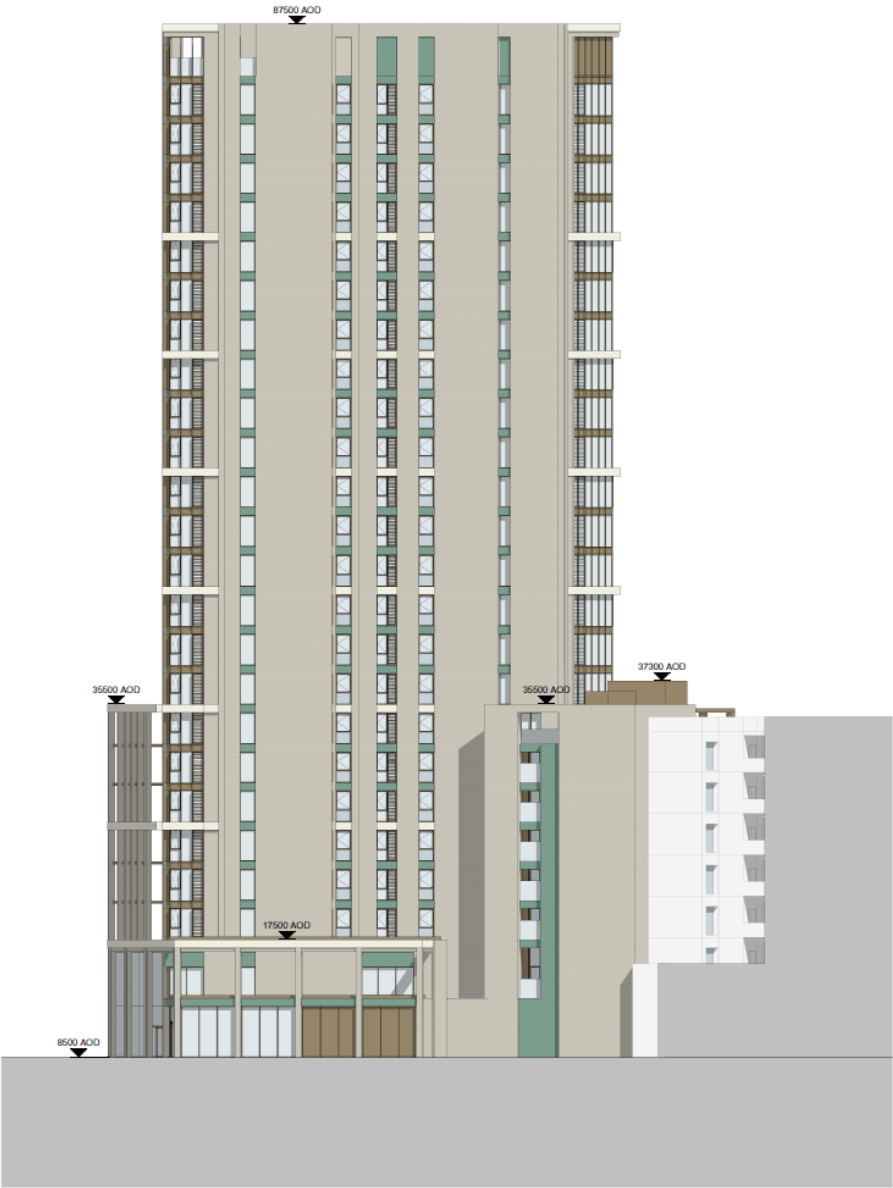
Key:

- ▲ Main fire personnel access point
- ▲ Principal Entrances
- - - Fire Appliance Access Route
- 18m Travel Distance
- Wet Riser (Room and Tank in basement)
- Fire Fighting Lift
- Fire Fighting Stair
- Evacuation Lift
- ← Escape route

The Hale Elevation

Window readjustment to suit additional stair and evacuation lift.

Key Plan



3 South-East Elevation
1 : 200